

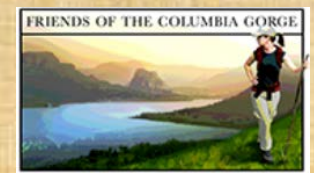
Volunteers Digging In With Weed Management Post Eagle Creek Fire



John Cowan, Oregon Parks & Recreation Department

Katie Santini, U.S. Forest Service

Mika Barrett, Friends of the Columbia Gorge





2017 Eagle Creek Fire



Two Weeks Post Fire







Cross-Agency and Nonprofit Collaboration

- **ODOT** closed the **roads**
- **Forest Service** closed the **trails**
- **State Parks** closed the **parks**
- ODOT, USFS, Parks collaborated on tree risk assessment
- Nonprofit partners mobilized **public interest of 2,500 volunteers**
 - Invasive plant removal
 - Trail work and repairs







Oregon Parks and Recreation Department

U.S. Forest Service





- **BAER Team Values At Risk**
 - Human life and safety
 - Multnomah Falls with the historic lodge
 - Many recreation sites and trails
 - The Historic Columbia River Highway/Oregon Hwy. 30
 - Bonneville, Cascade, and Oxbow Fish Hatcheries
 - Bonneville Power Administration (BPA) powerlines
 - Historic structures, including at Eagle Creek , Roads and bridges
 - Water supplies for domestic use and for fisheries
 - Threatened and endangered (T &E) species, including Chinook, coho, and steelhead
 - Native plant and animal communities

Friends of the Columbia Gorge



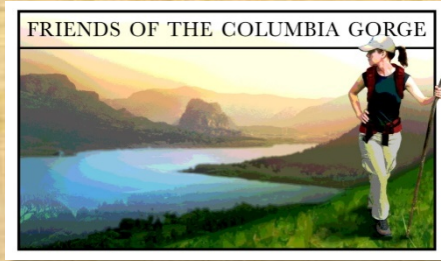


FOUND ON THE CHELSEA GROUND

**VOLUNTEER
STEWARDSHIP
WORK AHEAD**

ANGEL'S REST TRAIL

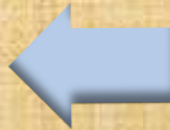
ANGEL'S REST	2.3 MI.
WAHKEENA TRAIL #420	4.8 MI.
WAHKEENA FALLS	6.4 MI.



***Volunteers**



***Licensed Applicator (Not Volunteers)**



***Volunteers**



Weeds

The CWMA has developed a Weed List to share information about weeds in our area.

Because the Columbia Gorge CWMA covers diverse ecoregions, the list is large and includes species listed in both Oregon and Washington. Some species will only display invasive qualities in certain areas of the gorge, while others are aggressive throughout the CWMA range. For more information on each weed, identification tips, or control please see the linked webpages.

[CWMA Weed List](#)

[CWMA Weed List Ranking](#)

*Thanks to all of the organizations that provided great information about the weeds and treatments!

The CWMA has also developed Best Management Practices (BMPs) for a handful of weeds in our area. BMPs provide information about identification and control measures for weeds.

[BEST MANAGEMENT PRACTICES](#)

[CWMA WEED LIST](#)

[WEED LIST RANKING](#)

[CANADA THISTLE](#)

[CEPHELODENDRON BLACKBERRY](#)

[RUSH SWEETWILLOW](#)

[SCOTCH BROOM](#)

[SANDY SAGEWORT](#)

[TREE OF HEAVEN](#)

[TALL DOGWOOD](#)

[GARLIC MUSTARD](#)

[HAWKWEED](#)

[RED-LEAVED DOGWOOD](#)

[WINDY DOGWOOD](#)

[WINDY DOGWOOD](#)



[CONTACT US](#)
COORDINATOR

[EMAIL US](#)
@ColumbiaGorgeCWMA

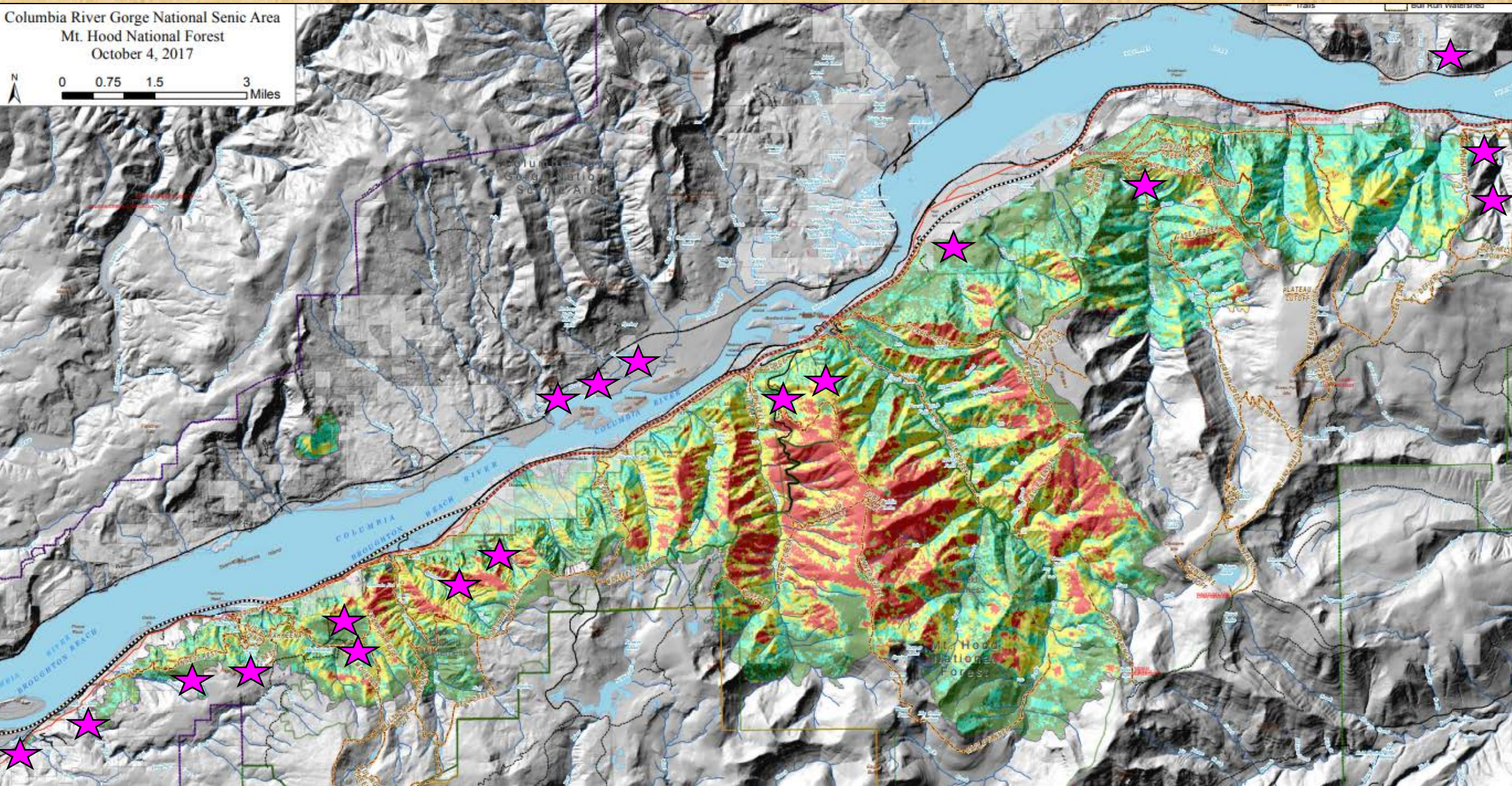




Stewardship Restoration Sites

Columbia River Gorge National Scenic Area
Mt. Hood National Forest
October 4, 2017

0 0.75 1.5 3 Miles



What do we do here?



Tooth Rock Trailhead: No burn?





400 Trail Site Burned



400 Trail Site

Pacific Crest Trail to Dry Creek Falls



Collins Pond



Collins Pond





Balfour-Klickitat Loop Trail

Balfour-Klickitat Loop Trail Area



How to get this to look like it “should”



When it looked like this...



And also looked like this not long ago.



Utilization of Volunteers to Carry Out Priorities

- Friends of the Gorge did great work organizing the huge turnout
- “We don’t have 2500 shovels”
- “I have 700 Norway maples, where do you want them.”
- “ I can bring a bag of Meadow Mix seeds and come right out.”
- “If it isn’t broke, don’t fix it.”
- Parks prioritized post fire projects for existing crews
- Utilize volunteers to extend program, pickup burn, cover the green
- CWMA: compare notes to support technical assessment, share resources, cross boundaries

Public Land Manager & Volunteer Engagement

- Meet up
 - Say thanks!
 - Orient to agency, place and property
 - Give operational and ecological context
 - Bring the tools, fix the tools, warehouse the tools
 - Don't build out so far that with less crew you lose progress
 - Right task for particular group or individual
 - Garden club may not enjoy picking up sticks
 - Kids might not be capable of planting in rocky soils
 - Blackberry work isn't glamorous...can you sell the job, what is the goal

Volunteer Stewards Can Take Many Forms



Do an earth day



Bring all the kids



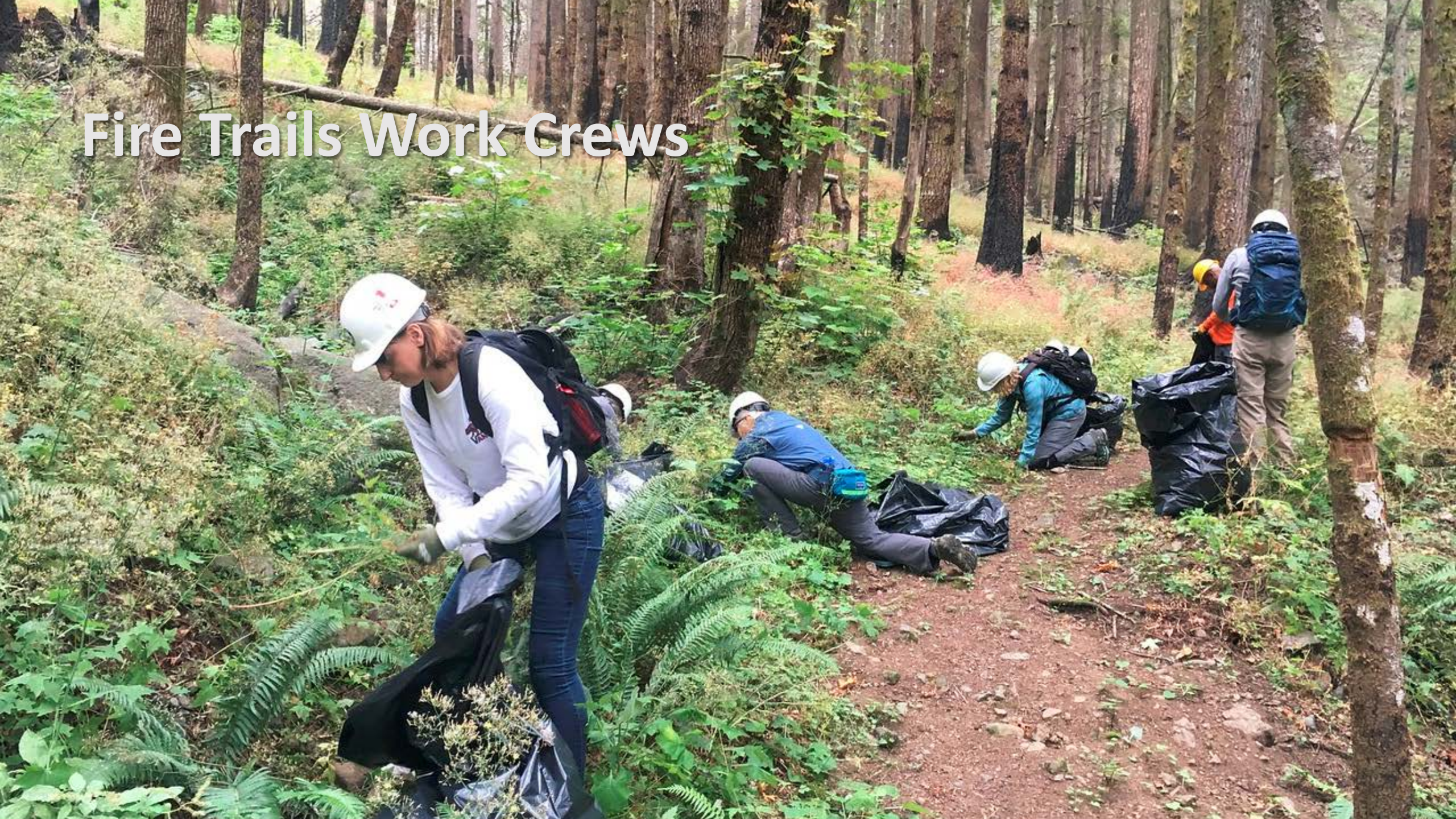
Even the little ones can help



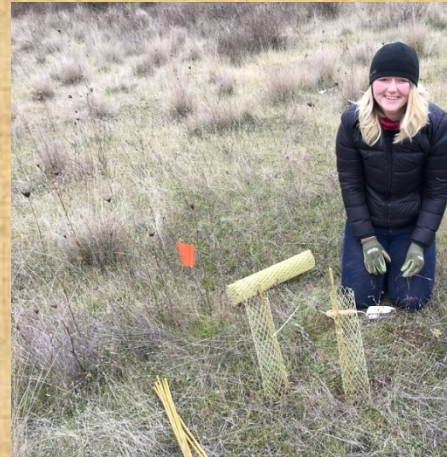
How about a garden club



Fire Trails Work Crews



How Our Work Has Changed Post Fire

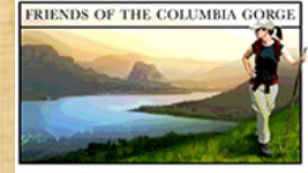


How Our Work Has Changed Post Fire



- Lots more crew to do the job
- More Ranger time to manage more crew
- Re-justify and assign contractors for existing control work
- Restoration projects are a significant additional time commitment
- Tree assessment must continue as failures can be slow to progress
- Uncertainty over sustaining cross agency cooperation

How Our Work Has Changed Post Fire



- 2018-2019: Led 100+ work parties, 1,000 volunteers at 20+ sites
 - Examples of Species: English ivy, European houndstongue, Garlic mustard, herb Robert, Himalayan blackberry, scotch broom, shiny geranium, spurge laurel
- 2020: Maintenance of projects & prioritization of new sites
 - Developed a stewardship matrix to get the highest ecological outcomes and increase volunteer engagement



Simple messages for volunteers & the public

- Come clean, leave clean
- Join a stewardship work party
- Embrace education
- Report a problem weed
- Leave No Trace etiquette
- Support our public lands and managers



Daylight hits the forest floor



Shiny geranium is still there



Herb Robert is roaring back!



Oh, we still do other things...



Still got garlic mustard



The Rock Wall re-bounds



Still: Provide and Protect



For all kinds of people



Let's make a challenge...



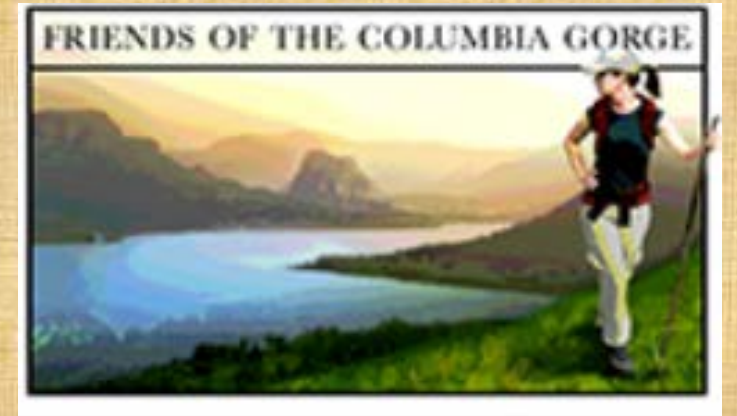
...into an opportunity!



Questions



Thank you



John Cowan, Oregon Parks & Recreation Department

Katie Santini, U.S. Forest Service

Mika Barrett, Friends of the Columbia Gorge