

A Word from WIN

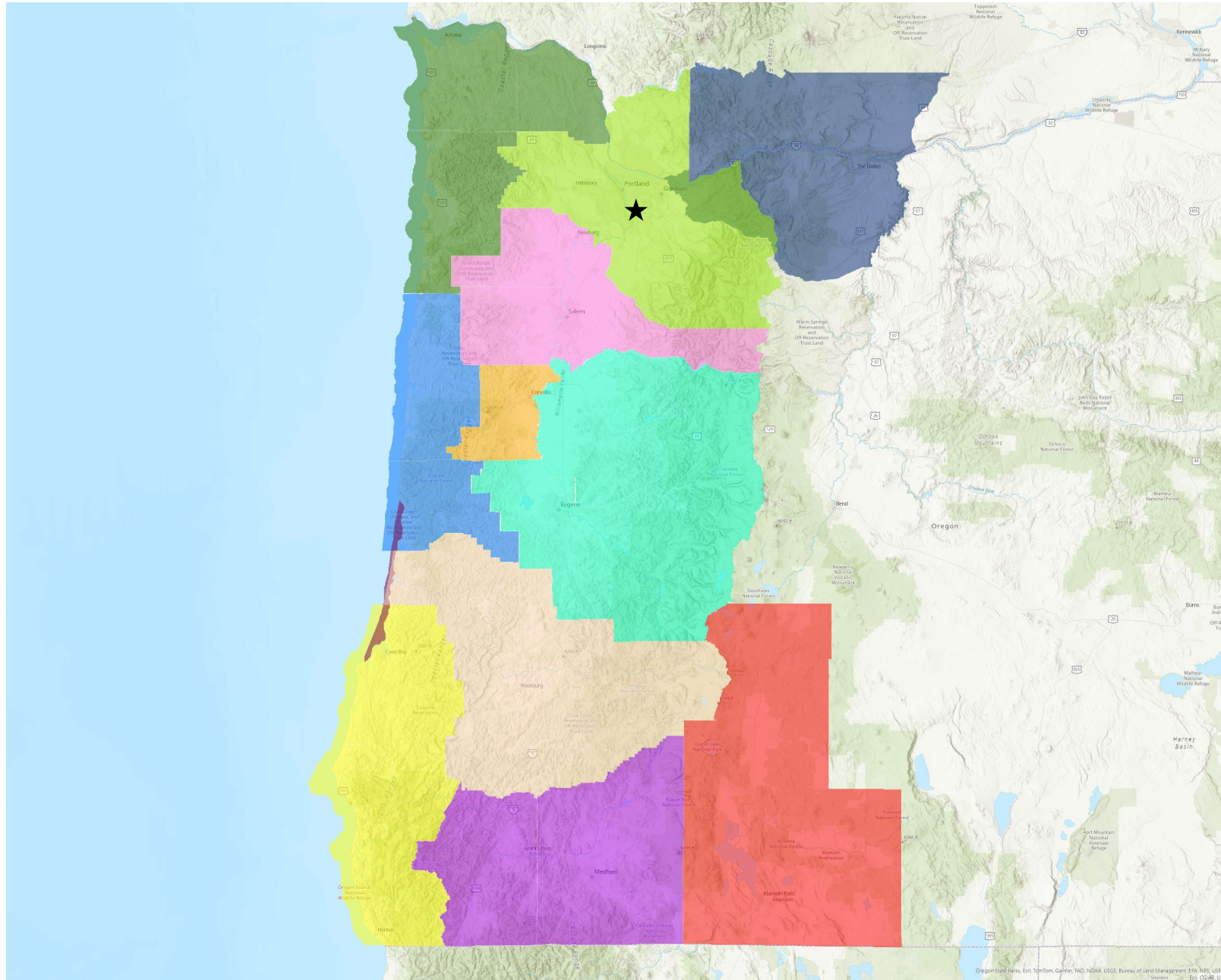
Courtney Gattuso

Western Invasives
Network Coordinator



Western Invasives Network (WIN)

- Regional partnership network in western Oregon & southwestern Washington
- **Mission:** to prevent the introduction and to control the spread of harmful invasive plant species by coordinating information and activities of Cooperative Weed Management Areas (**CWMAs**) and willing land managers.

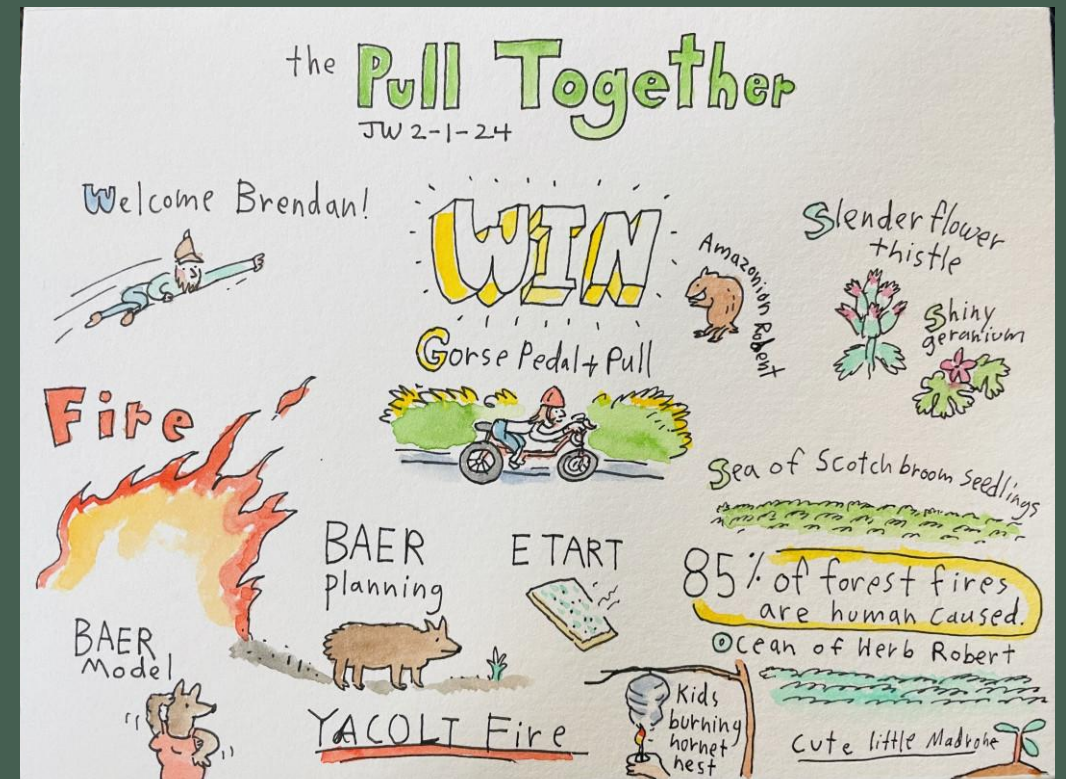


Our CWMAs

- 4-County
- Benton
- Columbia Gorge
- Douglas
- Dunes
- Jackson & Josephine
- Klamath
- Mid-Coast
- Mid-Willamette
- North Coast
- South Coast
- Upper Willamette
- ★ WIN Headquarters

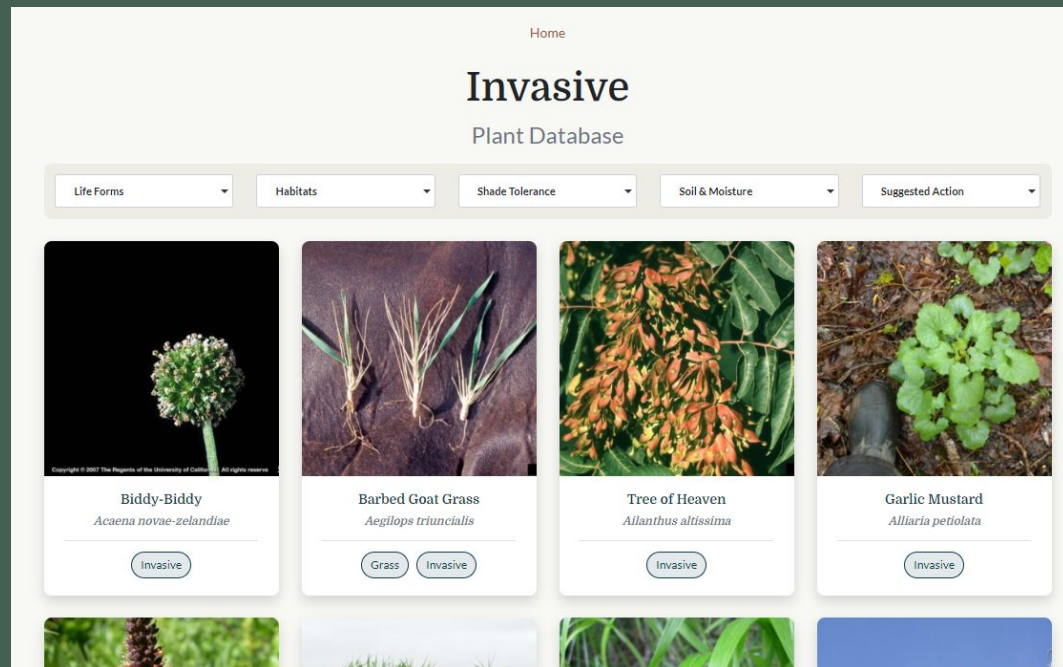
CWMA Highlights

- **4-County CWMA**
 - 15th annual Pull Together
 - New website!



CWMA Highlights

- **Mid-Willamette CWMA**
 - Weed of the Month flyers
 - New invasive plant database





ITALIAN THISTLE

Carduus pycnocephalus





IDENTIFICATION

Annual thistle up to 4 ft. tall with deeply incised leaves and spiny wings on stems. Stems and undersides of leaves covered with cobwebby hairs. Cylindrical purplish to pinkish flower heads that can either be solitary or in clusters. Blooms & sets seed in early summer.



IMPACTS

Degrades rangelands and pastures, creates dense stands that are impenetrable to livestock.



MANAGEMENT

Mowing encourages resprouting. For small infestations: cover with black plastic, dig, hand-pull, or till. For larger infestations, tilling or chemical methods are more effective. Always follow all label directions.



MID-WILLAMETTE CWMA

ABOUT US

The Cooperative Weed Management Area partnership connects land managers, increases weed awareness, and supports collaborative weed management efforts. Visit us at marionswcd.net/what-we-offer/mid-willamette-cwma/.

LEARN MORE ONLINE



WWW.MARIONSWCD.NET/PLANTS/ITALIAN-THISTLE/

CWMA Highlights

- **North Coast CWMA**
 - Invasive Plant & Field Preparedness Training



CWMA Highlights

- **South Coast CWMA**
 - Gorse Pedal & Pull Event



Oregon Dept. of Agriculture

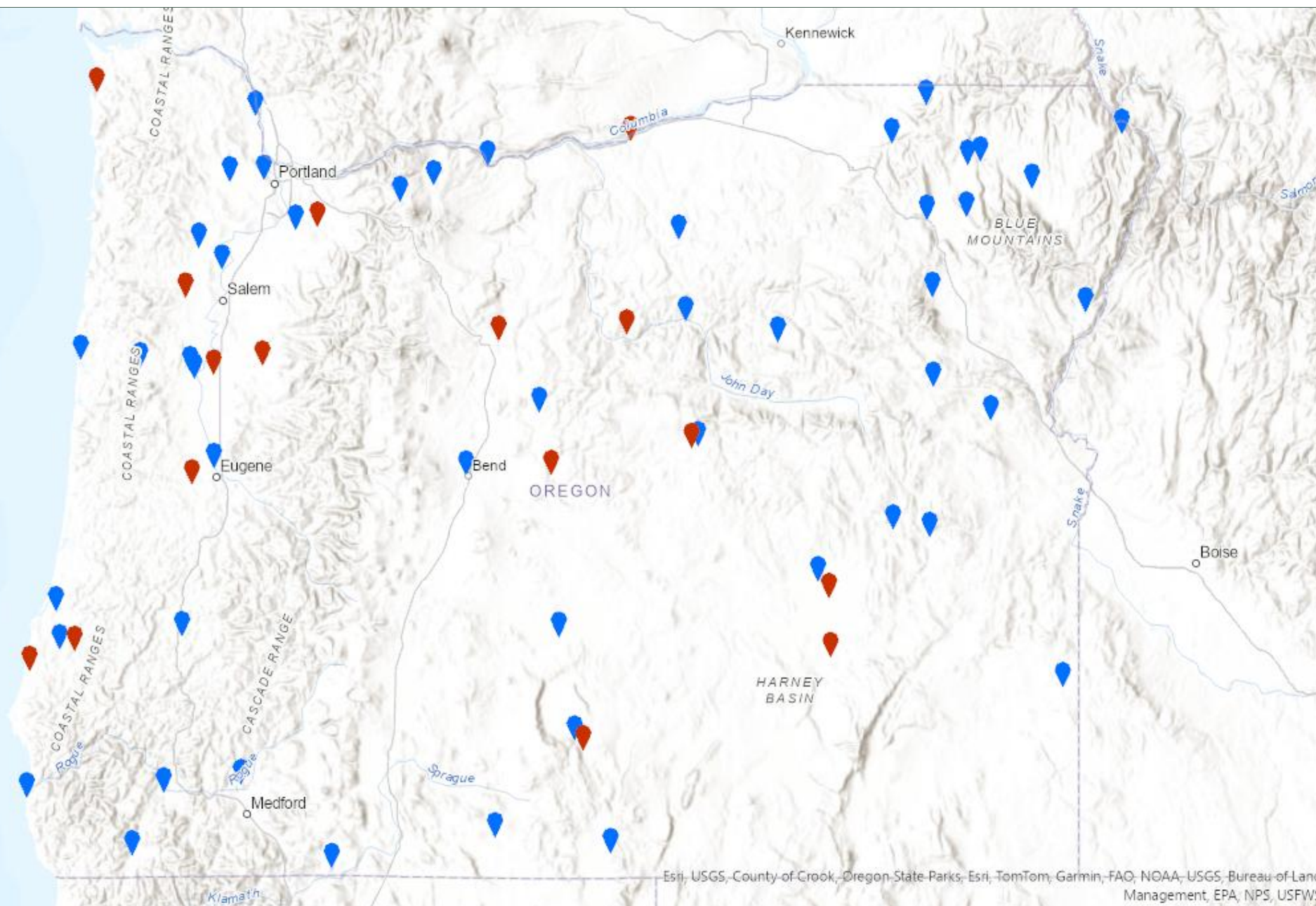
Oregon Interagency Noxious Weed Symposium

- December 10th – 12th, 2024 (biennial)
- LaSells Stewart Center (OSU—Corvallis, OR)

Oregon State Weed Board

- \$1,832,849 awarded to 49 grantees
- \$295,326 for county grant pool
- \$2,437,712 requested from 65 applications

3225



Esri, USGS, County of Crook, Oregon State Parks, Esri, TomTom, Garmin, FAO, NOAA, USGS, Bureau of Land Management, EPA, NPS, USFWS

iMapInvasives & OR Invasives Hotline

- **iMapInvasives:**

- Over 460,000 locations for 437 species
- 121 organizations have contributed
- 58 new iMap members added in 2023
- Most reported species: Garlic mustard
 - Knotweed most reported in 2023

- **Oregon Invasive Species Hotline (2023):**

- 136 species confirmed
- 810 reports submitted



Thank you!

Western Invasives Network
Coordinator

weeds@cascadepacific.org

760-464-3898

